

Description

The TUNPROTEC Model TPT-EXTR-SXY-I is an external trim for applications where the trim for the TPT Zone valve unit is moved away from the valve unit to a remote location.

The simple and prefabricated design of the Model TPT-EXTR-SXY-I reduces installation time and cost.

The Model TPT-EXTR-SXY-I can typically be installed if the trim is required to be located inside a service tunnel instead of inside the protected area due to the construction of the protected area or due to local regulations.

Application

The Model TPT-EXTR-SXY-I has been designed specifically for the protection of infrastructure tunnels, and similar applications.

Installation

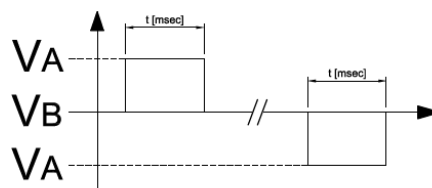
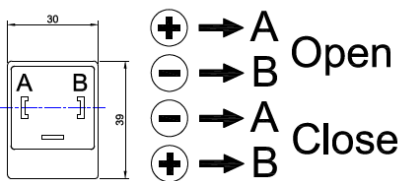
Once received the Model TPT-EXTR-SXY-I shall be stored under safe conditions, protected from harmful materials and physical damages.

The pilot pipe shall be made of ½" Stainless steel pipe with a maximum length of 150 meter. The pilot pipe should be installed as straight as possible avoiding changes in elevation.

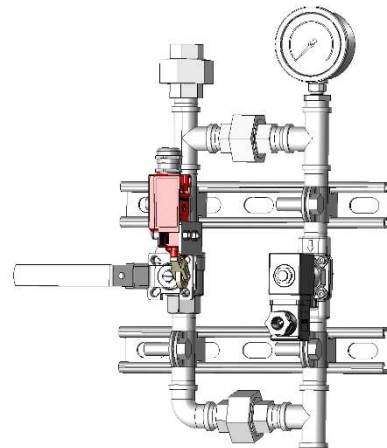
Prior to connect the Model TPT-EXTR-SXY-I, the ½" stainless steel pilot pipe must be properly flushed and rinsed for debris. The unit shall be properly fastened to the structure using proper screws depending on the structure material.

Impuls solenoid valve

- Impulse feed from 24 V DC for a period lasting from 20 to 100 ms.



NOTE: To ensure correct operation the fluid should be filtered to eliminate all traces of impurity subject to magnetic attraction, which would inevitably deposit on the cores of the solenoid valve, which are always magnetized, causing the formation of oxide as well as contact problem.



General Description	
Max. working pressure	16 Bar
Voltage	24 VDC
Solenoid type	Impulse (Latching coil)
Power consumption	1 x 10 W
Manual activation	Ball valve ½"
Tamper switch	NO / NC Contact
Pressure gauge	0 – 25 Bar
Inlet	½" BSP Female
Drain	½" BSP Female
Material	AISI 316
Max. length of pilot pipe	150 m
Dimension of pilot pipe	½" (OD 21,3 mm)

Related components			
Zone valve model TPT-C-M-XX-XX-NF-NT	C-EL control valve without trim, high-capacity filters and monitored manual test/service valves.	Zone valve model TPT-C-M-XX-XX-NF-NT	C-EL control valve, without trim and monitored manual test/service valves.
Zone valve model TPT-C-A-XX-XX-NT	C-EL control valve without trim, high-capacity filters, downstream motor operated isolation valve, motor operated test/drain valve and upstream manual operated isolation valve.	Zone valve model TPT-C-A-XX-XX-NT	C-EL control valve, without trim, downstream motor operated isolation valve, motor operated test/drain valve and upstream manual operated isolation valve.

NOTE:

The prefix XX-XX is defining the inlet and outlet on the zone valve unit.

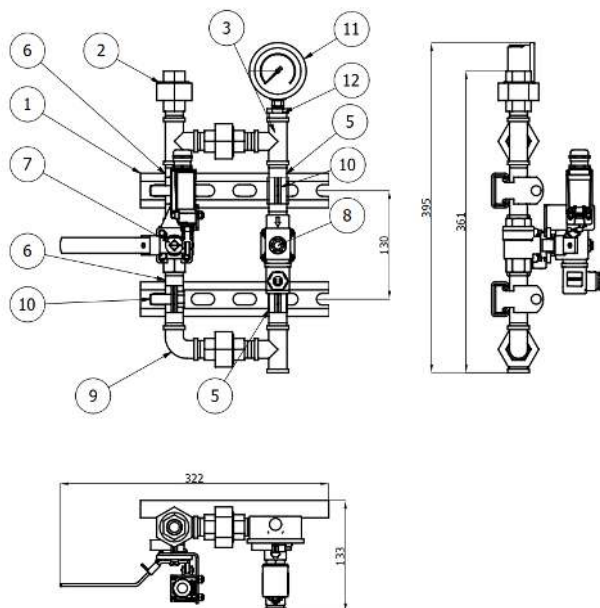
80-80 is DN80 C-EL valve with DN80 inlet and outlet.

80-50 is DN80 C-EL valve with DN80 inlet and DN50 outlet.

50-50 is DN50 C-EL valve with DN50 inlet and DN50 outlet.

The prefix A, the unit is with motor operated downstream isolation valve and drain valve, which can be remotely operated for testing which makes it easier to carry out regular testing of the system.

Details for the valve unit, reference is made to the separate data sheets for each unit.

Dimensions


Pos	Description	Material
1	UNI-Strut channel P3300T	AISI 316
2	Union coupling ½" BSP	AISI 316
3	Tee ½" BSP	AISI 316
5	Pipe ½"	AISI 316
6	Pipe ½"	AISI 316
7	Ball valve with limit switch ½"	AISI 316/Plastic
8	Solenoid valve, Impulse	AISI 316
9	Elbow 90 dg ½"	AISI 316
10	UNI-Strut pipe clamp M1115	AISI 316
11	Pressure gauge 63 mm	AISI 316
12	Reducing nipple ½" x ¼" BSP	AISI 316

Contact

For more information on the Model TPT-EXTR-SXY-I external trim, and the TUNPROTEC system and its components, kindly contact the TUNPROTEC sales team at sales@vidfirekill.com

VID Fire-Kill APS is not responsible for any errors or omissions, or for the results obtained from the use of this information. All information in this document is provided "as is", with no guarantee of completeness, accuracy, functionality, timeliness or of the results obtained from the use of this information.

VID FIREKILL ApS

Norgesvej 2,
 DK-5700 Svendborg
 Denmark
 Tel: +45 6262 1024
www.vidfirekill.com
sales@vidfirekill.com

Title: External trim S-XY-I
 No.: DS-250305-01-02_External_Trim_SXY-I
 Rev. 02
 Date of first issue: 05-03-2025
 Date of revision: 28-01-2026
 Page 2 of 2